



ST KATHERINE'S SIXTH FORM

COURSE OUTLINES

COURSE INDEX

Art & Design - A Level	3
Biology - A Level	4
Business Single Award - Vocational	5
Business Double Award - Vocational	6
Chemistry - A Level	7
Drama & Theatre - A Level	8
English Literature - A Level	9
Geography - A Level	10
Health & Social Care - Vocational	11
History - A Level	12
Hospitality - Vocational	13
Mathematics - A Level	14
Further Maths - A Level	15
Creative Digital Media Production - Vocational	16
Philosophy & Ethics - A Level	17
Physical Education - A Level	18
Physics - A Level	19
Product Design - A Level	20
Psychology - A Level	21
Sport - Vocational	22

COURSE OUTLINE

ART & DESIGN - A LEVEL



St Katherine's School



COURSE OUTLINE

This is a creative and exciting course and you will develop your artistic ability using a wide range of media. All students study a core curriculum covering drawing, mixed media, painting, sculpture, printmaking and written analytical skills. Students will work from primary and secondary sources in the classroom and visit galleries regularly to experience the work of other artists first hand.

DETAILS ABOUT THE COURSE

Topics covered:

In the first year of the course students are given a thorough grounding in core skills through experimentation using a wide variety of media. After the spring break students continue to develop their own ideas and specialisms more thoroughly whilst working on a personal coursework project.

Extra-curricular/trips:

An annual visit is made to either local or national galleries and exhibitions. Enrichment life drawing is organised every year, with visiting tutors from Weston College.

Future prospects:

Higher Education to study an arts course, animator, artist, film maker, graphic designer, interactive games designer, photographer, video contents developer, web designer.

You might also take...

Product design, media & film, hospitality.

KEY INFORMATION

Prior attainment:

Five grades at 9-4

Grade 5 in GCSE Art required

Grade 6 in GCSE Art desirable

Assessment:

Year 1:

Continual assessment from both members of staff who teach the course. Students always have current personal targets that are written in consultation with teachers. Final personal coursework project is started after the spring break.

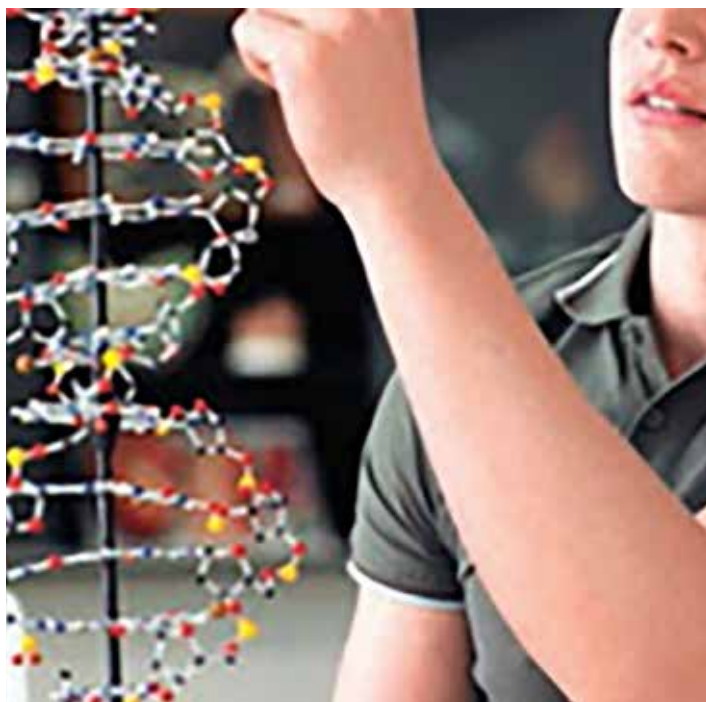
Year 2:

One complete coursework personal project produced in eight school months.

Exam preparation for three months and a final piece completed in a 15 hour exam.

COURSE OUTLINE

BIOLOGY - A LEVEL



COURSE OUTLINE

Through learning about biological principles and processes, you will appreciate how biologists approach problems and provide solutions with efficacy. A Level biology will develop the essential skills of investigating a problem with the aim of generating evidence from which valid conclusions can be drawn.

DETAILS ABOUT THE COURSE

Topics covered:

Topic 1: What causes cardiovascular disease?

Topic 2: What causes cystic fibrosis?

Topic 3: How do you get a fertilised egg to a whole organism?

Topic 4: How does the rainforest depend on the fig tree?

Topic 5: Why are polar bears endangered?

Topic 6: How is biology used to solve crimes?

Topic 7: How does biology make you a good athlete?

Topic 8: How does your brain work?

Extra-curricular/trips:

Biological fieldwork trips to @Bristol, Clevedon, Brean and Bristol Zoo

Future prospects:

Genetics, teaching medicine, nursing, environmental sciences, forensic science, zoology, veterinary science, ecology

You might also take...

Chemistry, physics, maths, PE, psychology, geography

KEY INFORMATION

Prior attainment:

Five grades at 9-4

Grade 6 in GCSE biology or grade 6s in combined science required

Grade 7 in GCSE biology or grade 7s in combined science desirable

Grade 5+ in GCSE maths desirable

Assessment:

Year 1:

Paper 1 - Lifestyle, Transport, Genes and Health (50%)

Paper 2 - Development, Plants and the Environment (50%)

Year 2:

Paper 1 - The Natural Environment and Species Survival

Paper 2 - Energy Exercise and Communication

Paper 3 - General and Practical Applications in biology

100% written examination for all papers

COURSE OUTLINE

BUSINESS SINGLE AWARD - VOCATIONAL



COURSE OUTLINE

When you study for a diploma you learn by 'doing'. So expect a mixture of conventional classroom theory and 'real world' practical projects and be prepared to work as a team, just as you would in the workplace. The course provides opportunities for visits to local businesses and guest speakers to work with you in the classroom.

DETAILS ABOUT THE COURSE

Topics covered:

Year 12 (National certificate):

Exploring business
Developing a marketing campaign

Year 13 (National extended certificate):

Personal and business finance
Recruitment and selection process

Extra-curricular/trips:

Young Enterprise - set up and run your own business & the Pro Share competition. Army team building day.

Future prospects:

Business management, human resource management, accounting, finance, business services, higher education

You might also take...

Hospitality, applied science, ICT, sport & health & social care

KEY INFORMATION

Prior attainment:

Four grades at 9-4
L2 Pass grade in business is preferred.

Assessment:

40% internal assessment
60% external assessment
2 units (assessed by exam board)
Written exam
Written task
2 units (assessed internally and moderated)

Problem solving, teamwork, independence and communication are all essential.

COURSE OUTLINE

BUSINESS DOUBLE AWARD - VOCATIONAL



COURSE OUTLINE

When you study for a diploma you learn by 'doing'. So expect a mixture of conventional classroom theory and 'real world' practical projects and be prepared to work as a team, just as you would in the workplace. The course provides opportunities for visits to both local and national businesses and guest speakers to work with you in the classroom.

DETAILS ABOUT THE COURSE

Topics covered:

Year 12:

Principles of management
Managing an event

Year 13:

International Business
Work experience

Extra-curricular/trips:

Young Enterprise - set up and run your own business & the Pro Share competition. Army team building day.

Future prospects:

Business management, human resource management, accounting, finance, marketing through higher education or apprenticeships.

You might also take...

Hospitality, applied science, ICT, sport & health & social care.

KEY INFORMATION

Prior attainment:

Four grades at 9-4
L2 Merit grade in business is preferred.

Assessment:

40% internal assessment
60% external assessment

3 units (assessed by exam board)

Written exam
Written task pre seen case study

5 units (assessed internally and moderated)

Problem solving, teamwork, independence and communication are all essential.

COURSE OUTLINE

CHEMISTRY - A LEVEL



St Katherine's School



COURSE OUTLINE

Chemistry is an enjoyable and interesting subject and it can open up many different options. Successful study proves that you possess such qualities as creativity, numeracy and the ability to think logically and solve problems.

These qualities are important in careers from accountancy to zoology. It could complement other sciences or be part of a broader range of subjects.

DETAILS ABOUT THE COURSE

Topics covered:

Topic 1: Practical skills in chemistry

Topic 2: Foundations in chemistry

Topic 3: Periodic table and energy

Topic 4: Core organic chemistry

Topic 5: Physical chemistry and transition elements

Topic 6: Organic chemistry and analysis

Extra-curricular/trips:

Chemistry Olympiad, Cambridge Chemistry Challenge.

Future prospects:

Biochemistry, chemistry, teaching, medicine, nursing, environmental sciences, forensic science, veterinary science, accounting.

You might also take...

Biology, physics, maths, PE, psychology.

KEY INFORMATION

Prior attainment:

Five grades at 9-4

Grade 6 in GCSE chemistry or grade 6s in combined science required

Grade 7 in GCSE chemistry or grade 7s in combined science desirable

Assessment:

Year 1:

20 Marks multiple choice

50 Marks structured questions Paper 2 (50%)

70 marks structured questions

Year 2:

15 Marks multiple choice

85 Marks structured questions Paper 2 (26%)

85 Marks structured questions

Practical Skills - Teacher-assessed and awarded as a separate pass/fail grade

COURSE OUTLINE

DRAMA & THEATRE - A LEVEL



COURSE OUTLINE

The A Level course focuses on developing practitioner knowledge and methodologies used to create effective theatre. The course is split into three sections; C1 devising original theatre with supporting coursework, C2 group and solo performance and C3 written exam. We study a range of texts and a variety of theatre makers such as Stanislavski, Brecht, Berkoff, Frantic assembly and Artaud.

DETAILS ABOUT THE COURSE

Topics covered:

Component One: Devising

Component Two: Text in Performance

Component Three: Theatre makers in Practice

Extra-curricular/trips:

Theatre visits to support the written evaluation of live theatre in Year 12 and 13 as well as continual after school rehearsals. Professional theatre company workshops to deepen knowledge and theory.

Future prospects:

Theatre work, acting, directing, stage management, teaching, law and script writing.

You might also take...

English literature, art and design, media & film, history.

KEY INFORMATION

Prior attainment:

Five grades at 9-4

Grade 5 in GCSE drama and grade 5 English literature required

Grade 6 in GCSE drama and grade 6 English literature desirable

Assessment:

Year 12:

Mock performances

Mock coursework and exam

Year 13:

C1 Devising 40%

C2 Text in Performance 20%

C3 Theatre makers in practise 40%

Communication, teamwork, independence and creativity are essential skills for this course.

COURSE OUTLINE

ENGLISH LITERATURE - A LEVEL



St Katherine's School



COURSE OUTLINE

Learners encounter a rich range of literary texts and develop skills of reading, analysis and synthesis. Wider reading is an essential part of the course. Communication, including the ability to discuss the critical context of texts and expressing ideas in an academic register, is at the heart of the subject.

DETAILS ABOUT THE COURSE

Topics covered:

From Shakespeare to modern literature: the course covers all forms of literature in every genre. There is a coursework element in Year 13 with an exploration of personal investigation into pre 1914 and post 1914 texts.

Extra-curricular/trips:

A variety of trips and guest speakers from a range of universities allow students to engage with all aspects of the course and beyond.

Future prospects:

Higher education, management, journalism, teaching, marketing, advertising and many more.

You might also take...

History, philosophy and ethics, media & film & drama.

KEY INFORMATION

Prior attainment:

Five grades at 9-4

5 grade in GCSE English and grade 5 English literature required

6 grade in GCSE English and grade 6 English literature desirable

Assessment:

Year 1:

100% examination

This is 40% of the course

Year 2:

40% examination

20% coursework

This is 60% of the course

Ability to read, teamwork, independence and creativity are all essential.

COURSE OUTLINE

GEOGRAPHY - A LEVEL



COURSE OUTLINE

Studying geography at A Level provides you with knowledge and understanding that is essential for any citizen of the planet in the 21st century. Through exciting topics you will understand the nature of physical and human geography whilst unpicking the debates surrounding contemporary global challenges. The course will equip you with the skills necessary for success in higher education and the world of work. Geography is a multidisciplinary subject in a world that increasingly values people who have the skills to work across the physical and social sciences.

DETAILS ABOUT THE COURSE

Topics covered:

Coastal Landscape Systems
Earth's Life Support Systems
Urban Change and Development
Global Migration, Human Rights
2 of Climate Change, Hazardous Earth, Disease Dilemmas, Exploring Oceans, Future of Food

Extra-curricular/trips:

Three days of group fieldwork, coastal and urban.
One independent day of fieldwork to complete Unit 4.

Future prospects:

Environmental engineering, politics, archaeology, higher education, teaching, journalism, planning and development, civil service, non-profit, international development, architecture, conservation.

You might also take...

Maths, biology, chemistry, history, English literature, philosophy and ethics, psychology.

KEY INFORMATION

Prior attainment:

Five grades at 9-4
Grade 5 in GCSE geography required
Grade 6 in GCSE geography desirable
For high attaining students, GCSE geography may not be required.

Assessment:

Unit 1: Physical Systems
(1 hour 30 minute written examination)

Unit 2: Human Interactions
(1 hour 30 minute written examination)

Unit 3: Geographical Debates
(2 hour 30 minute written examination)

Unit 4: Investigative geography (Non-examination assessment between 3,000-4,000 words)

An enquiring mind is essential.

COURSE OUTLINE

HEALTH & SOCIAL CARE - VOCATIONAL



COURSE OUTLINE

Health and Social Care aims to provide an introduction to the sector. It is for learners who are interested in learning about the health and social care sector. Learners can also benefit from opportunities for deep learning where they are able to make connections among units and select areas of interest for detailed study. It is ideal for those wishing to look into care in the future.

DETAILS ABOUT THE COURSE

Topics covered:

Year 12 (National certificate):

Unit 1: Building positive relationships in H&SC

Unit 2: Equality, diversity and rights in H&SC

Unit 3: Health, safety and security in H&SC

Year 13 (National extended certificate):

Unit 4: Anatomy and physiology for H&SC

Unit 13: Sexual health, reproduction and early development stages

Unit 24: Public health

Extra-curricular/trips:

Working with our links such as the Penny Brohn, we will look to ensure that you can apply your health care / university setting.

Future prospects:

Care sector, higher education, mental health, nursing, midwifery, adult care, child care, teaching, public services.

KEY INFORMATION

Prior attainment:

Five grades at 9-4

Grade 4 in English preferred

Grade 5 in English desirable

Assessment:

75% external assessment

25% internal assessment

Year 1

Unit 1: Building positive relationships in H&SC

Unit 2: Equality, diversity and rights in H&SC

Unit 3: Health, safety and security in H&SC

Year 2

Unit 4: Anatomy and physiology for H&SC

Unit 13: Sexual health, reproduction & early development

Unit 22: Public health

COURSE OUTLINE

HISTORY - A LEVEL



COURSE OUTLINE

The A Level course comprises of four units: British, German and American history as well as an independent study. The study of Germany's transition from democracy to dictatorship includes an opportunity to visit Auschwitz-Birkenau in Poland. Students will also learn of the struggle of different groups to gain their freedom and equal rights within American society. Students will also hone their source skills examining the later Tudor monarchs: Edward, Mary and Elizabeth.

DETAILS ABOUT THE COURSE

Topics covered:

British history
German history
Thematic study - civil rights in America
Personal Investigation 3000-4000 word essay

Extra-curricular/trips:

Residential trip to Auschwitz.

Future prospects:

Apart from being interesting, history can be extremely useful. Employers recognise the variety of skills that its study can encourage such as the ability to analyse information and the ability to construct an argument effectively. It relates to a number of career paths such as law, teaching, politics, curating, and other higher education courses.

You might also take...

English literature, philosophy and ethics, geography, drama and theatre studies & psychology.

KEY INFORMATION

Prior attainment:

Five grades at 9-4
Grade 5 in GCSE history required
Grade 6 in GCSE history desirable

Assessment:

Year 1

Unit 1: British history 1547-1603
Unit 2: German history 1919-1963

Year 2

Unit 3: Thematic study - Civil rights in America
Unit 4a: Personal investigation (3000-4000 word essay)

Source analysis, teamwork, independence and communication are all essential.

COURSE OUTLINE

HOSPITALITY - VOCATIONAL



St Katherine's School



COURSE OUTLINE

The hospitality industry is made up of many sectors, including hotels, restaurants, pubs, visitor attractions, events management and contract catering. The Level 3 BTEC Subsidiary Diploma in Hospitality will give you a taste of the huge range of job opportunities which exist in this young and dynamic service industry. Your learning will take you out of the classroom and into our state of the art kitchens and training restaurant - The Leaf at Ham Green. Here you will gain valuable practical experience and learn from serving real customers.

DETAILS ABOUT THE COURSE

Topics covered:

Year 12

- Unit 1: The hospitality industry
- Unit 6: Food and drink service
- Unit 22: Planning a hospitality event
- Unit 2: Supervising customer service

Year 13

- Unit 12: World food
- Unit 3: Providing customer service
- Unit 7: Alcoholic beverages

Extra-curricular/trips:

Work with a number partners to deliver high quality placements including McDonalds, The Marriott and Penny Brohn.

Future prospects:

Hospitality industry, events management, hotel management, restaurateur, human resource management.

You might also take...

Business, health and social care, sport, media and film, art.

KEY INFORMATION

Prior attainment:

- Four grades at 9-4
- L2 pass in hospitality
- L2 merit in hospitality desirable

Assessment:

- Unit 1: The hospitality industry
- Unit 2: Supervising customer service
- Unit 3: Providing customer service
- Unit 6: Food and drink service
- Unit 7: Alcoholic beverages
- Unit 12: World food
- Unit 22: Planning events

100% Coursework and practical assessments.
There is no external exam.

COURSE OUTLINE

MATHEMATICS - A LEVEL



COURSE OUTLINE

Mathematics at AS and A2 builds on work you will have met at GCSE, but also involves new ideas produced by some of the greatest minds of the last millennium. If you have a mathematical flair and enjoy the challenge of problem solving then this is the course for you.

DETAILS ABOUT THE COURSE

Topics covered:

Pure 1
Pure 2
Applied (Mechanics and Statistics)

Extra-curricular/trips:

You will have the opportunity to take part in UKMT National Challenge competitions as an individual and as part of a team representing the school. Visits to maths events at UWE and Bristol University, as well as maths Inspiration at the Bristol Hippodrome.

Future prospects:

All forms of engineering; accountancy, aerospace and defence, manufacturing, environmental industry. Pharmaceutical industry, healthcare, bio science, medicine.

You might also take...

Further maths, physics, chemistry, biology, geography, psychology.

KEY INFORMATION

Prior attainment:

Five grades at 9-4
Grade 7 in GCSE maths required
Grade 8 in GCSE maths desirable

Assessment:

Year 1 - Should it be appropriate to only take course to AS Level:

100% examination
1 Pure - 120 mins
1 Applied (Mechanics & Statistics) - 60 mins

Year 2:

2 Pure exams - 120 mins each
1 Applied (Mechanics & Statistics) - 120 mins

Problem solving, teamwork, independence and communication are all essential.

COURSE OUTLINE

FURTHER MATHS - A LEVEL



St Katherine's School



COURSE OUTLINE

Further mathematics at AS and A2 should be studied in addition to AS and A2 maths. It is an opportunity to both broaden and deepen your mathematical knowledge, through studying additional more challenging topics in pure maths as well as a wider range of topics in applied maths, including decision maths and mechanics.

DETAILS ABOUT THE COURSE

Topics covered:

Decision maths
Pure maths
Mechanics

Extra-curricular/trips:

Opportunities in and outside of school including Bristol University student lessons and the engineering in the Access to Bristol Scheme.

Future prospects:

Finance and banking, operational research, computer game design, engineering, health, education, teaching, accounting.

You might also take...

Maths, physics, chemistry, biology, product design, PE, psychology.

KEY INFORMATION

Prior attainment:

Five grades at 9-4
Grade 8 in GCSE maths required
Grade 9 in GCSE maths desirable

Assessment:

Year 1 - Should it be appropriate to only take course to AS Level:

100% examination
1 Decision maths exam
1 Pure maths exam

Year 2:

100% examination
2 Pure maths exams
1 Decision maths exam
1 Mechanics exam

Problem solving, teamwork, independence and communication are all essential.

COURSE OUTLINE

CREATIVE DIGITAL MEDIA PRODUCTION - VOCATIONAL



COURSE OUTLINE

Students investigate different mediums; film, print, internet and consider how audiences are targeted, how representations are created and how certain companies still dominate in industry. Students will respond to professional briefs with their own creative ideas and then create media using industry standard software.

They will produce their own blogs, create film shorts or digital magazines depending on their area of interest.

DETAILS ABOUT THE COURSE

Topics covered:

Media Representation
Responding to a brief
Film or Magazine Production
Research and planning portfolios and blog making

Extra-curricular/trips:

Links with BBC Talent Ticket - opportunity for work experience, links with BFI Bristol - opportunity to gain Silver Arts Award & cinema trips.

Future prospects:

Foundation for further study in film, media, cultural Studies and English. Media related industries - print media, film, TV or radio.

You might also take...

English, product design, art and design, history, drama and theatre studies, sport/PE, business studies.

KEY INFORMATION

Prior attainment:

Five grades at 9-4
Grade 4 in GCSE English required
Grade 6 in GCSE English desirable

Assessment:

Year 1

Media Representation - exam
Introductory practical skills
Research and planning portfolio

Year 2:

Responding to a brief - exam
Film production or Magazine production

Creativity, teamwork, independence and communication are all essential.

COURSE OUTLINE

PHILOSOPHY & ETHICS - A LEVEL



St Katherine's School



COURSE OUTLINE

Do you ever question life? If so then this course is for you. You will be able to develop your interest and enthusiasm for a rigorous study of philosophy and ethics and relate it to the wider world. You will adopt an enquiring, critical and reflective approach and reflect on and develop your own values, opinions and attitudes in the light of your learning. You will learn and understand how people make moral decisions and you will formulate your own opinions on various current ethical issues.

DETAILS ABOUT THE COURSE

Topics covered:

Arguments for the existence of God
Ethical theory
The basis of religious belief
Life after death
War and peace, justice and law

Future prospects:

Philosophy and ethics is an excellent subject that combines many disciplines. It can lead you onto a number of career paths including, higher education, teaching, politics, the civil service, marketing, advertising and law.

You might also take...

English, history, geography, psychology, media and film.

KEY INFORMATION

Prior attainment:

Five grades at 9-4
Grade 5 in GCSE English required
Grade 6 in GCSE English desirable

Assessment:

Year 1

Arguments for the existence of God
Ethical theory
The study of a religion

Year 2:

Arguments for the existence of God
Ethical theory
The study of a religion

Critical thinking, teamwork, independence and communication are all essential.

COURSE OUTLINE

PHYSICAL EDUCATION - A LEVEL



COURSE OUTLINE

A Level PE gives you a chance to study how the body responds to exercise, how you learn new skills, where sport sits in society, how the mind influences performance and how sport has developed. Studying these components will improve your understanding of sporting performance, coaching and sports analysis.

DETAILS ABOUT THE COURSE

Topics covered:

Physiological Factors Affecting Performance
Psychological Factors Affecting Performance
Socio-cultural and Contemporary Issues
Performance within Physical Education

Extra-curricular/trips:

We work with our partners to access a range of facilities and placements.

Future prospects:

Higher education, PE teaching, sports development, sports journalism, sports media, sports coaching, performance analysis, strength & conditioning, nutrition, physiotherapy, sports therapy, sports administration, sports engineering, sports science, sports psychology.

You might also take...

Biology, maths, physics, psychology, geography and chemistry.

KEY INFORMATION

Prior attainment:

Five grades at 9-4
Grade 5 in GCSE biology and a Merit in Sport required
Grade 6 in GCSE biology and a Distinction in Sport desirable
Must be participating in regular competitive club level sport outside of school

Assessment:

Year 1

Unit 1: Physiological Factors Affecting Performance - 30%
Unit 2: Psychological Factors Affecting Performance - 20%

Year 2:

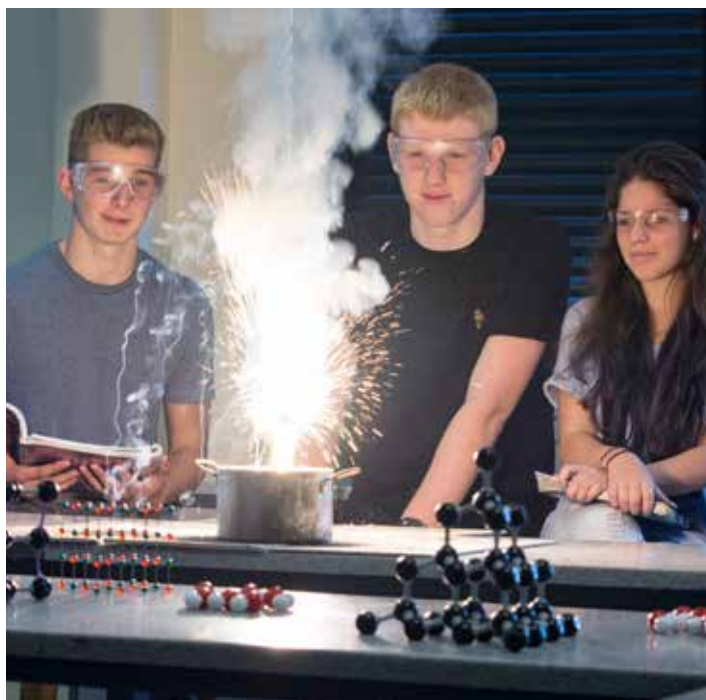
Unit 3: Socio-cultural and contemporary issues - 20%
Unit 4: Performance within physical education - 30%
(50% practical / 50% EAPI)

COURSE OUTLINE

PHYSICS - A LEVEL



St Katherine's School



COURSE OUTLINE

Physics A Level considers how and why things work. It covers topics ranging from Quantum Mechanics to the Origin of the Universe. Look at the world around you; physics is the only course which explains the universe from small to large, from beginning to the end. If you wish to be able to explain where you came from and where you are going to, then this is the course for you. Employers have listed it time and again as one of the most respected A Levels available.

DETAILS ABOUT THE COURSE

Topics covered:

- Topic 1: Development of practical skills
- Topic 2: Foundations of physics
- Topic 3: Forces and motion
- Topic 4: Electrons, waves and photons
- Topic 5: Newtonian world and astrophysics
- Topic 6: Particles and medical physics

Extra-curricular/trips:

There are a range of enrichment activities including the British Physics Olympiad and Annual CERN trips.

Future prospects:

Medicine, engineering, teaching, higher education, research, MOD and computer science.

You might also take...

Maths, further maths, chemistry, biology, product design, PE.

KEY INFORMATION

Prior attainment:

- Five grades at 9-4
- Grade 6 in GCSE physics/combined science and grade 6 in maths required
- Grade 7 in GCSE physics/combined science and grade 7 in maths desirable

Assessment:

Year 1

- Breadth in physics examination
- Depth in physics examination

Year 2:

- Modelling physics examination
- Exploring physics examination
- Unified physics examination

Problem solving, teamwork, independence and communication are all essential.

COURSE OUTLINE

PRODUCT DESIGN - A LEVEL



COURSE OUTLINE

Look at the world around you; everything you come into contact with has been designed and developed by product designers and design engineers. From the clothes you choose to wear, the cars you use for transport, the buildings you live and work in, to the products that make your life easier and more enjoyable. Product design is an extremely diverse and rewarding career, which is essential in an ever changing world.

DETAILS ABOUT THE COURSE

Topics covered:

Core technical principles.
Core designing and making principles.
Additional specialist knowledge.

Extra-curricular/trips:

STEM club, various competitions and trips to London and Glasgow.

Future prospects:

Product design, Industrial design, Engineering, Graphic Design, Architecture, Teaching, Furniture designer, Interior designer, Materials engineer, Product Manager

You might also take...

English, product design, fashion & textiles, art, physics & mathematics.

KEY INFORMATION

Prior attainment:

Five grades at 9-4
Grade 5 in GCSE Design & Technology required
Grade 6 in GCSE Design & Technology desirable

Assessment:

Written Examination - 50% - June of the second year.
Design and Make project - 50% - Starts term 4 of the first year

Essential skills needed

Creativity, Teamwork, Independence, Communication.

COURSE OUTLINE

PSYCHOLOGY - A LEVEL



COURSE OUTLINE

Psychology is the science of mind and behaviour. We use scientific methods in order to explore how and why people behave the way that they do. Psychology covers a broad range of topic areas which aim to prepare learners for a variety of university courses and employment opportunities such as education, sport, health and media. Psychology will suit students who are interested in other people and the differences between us all.

DETAILS ABOUT THE COURSE

Topics covered:

Cognitive functioning, Developmental psychology, Research methodologies, Social influences, Biopsychology, Issues and debates, Gender, Schizophrenia

Extra-curricular/trips:

Links with Bristol University for guest lectures and visits.

Future prospects:

Psychologist, teaching, counselling, marketing, consulting, human resource management.

You might also take...

Biology, PE, English, geography, history, maths, sport, philosophy and ethics.

KEY INFORMATION

Prior attainment:

Five grades at 9-4

Grade 5 in GCSE biology & grade 5 in maths required

Grade 6 in GCSE biology & grade 6 in maths desirable

Assessment:

Year 1

Introductory topics in psychology

Psychology in context

Year 2

Introductory topics in psychology

Psychology in context

Issues in psychology

Application of knowledge, evaluation, teamwork, independence and communication are all essential.

COURSE OUTLINE

SPORT - VOCATIONAL



St Katherine's School



COURSE OUTLINE

You will learn about the fundamental anatomy and physiology that affects sports performance, how training and following programmes of work can adapt the body for sporting performance. Understand the potential careers and job opportunities can be followed and the analysis of practical performance.

DETAILS ABOUT THE COURSE

Topics covered:

Cognitive functioning, Developmental psychology, Research methodologies, Social influences, Biopsychology, Issues and debates, Gender, Schizophrenia

Extra-curricular/trips:

Links with Bristol University for guest lectures and visits.

Future prospects:

Psychologist, teaching, counselling, marketing, consulting, human resource management.

You might also take...

Biology, PE, English, geography, history, maths, sport, philosophy and ethics.

KEY INFORMATION

Prior attainment:

Five grades at 9-4
L2 pass in sport preferred
L2 merit in sport desirable

Assessment:

40% external assessment
60% internal assessment

Year 1:

Unit 1 (90 GLH mandatory) - Body systems and the effects of physical activity (external exam)

Unit 2 (90 GLH mandatory) - Sports coaching and activity leadership (coursework)

Year 2:

Unit 3 (60 GLH mandatory) - Sports organisation and development (external exam)

Unit 18 (60 GLH optional) - Practical skills in sport and physical activities





St Katherine's School

Ham Green,
North Somerset
BS20 0HU

Telephone: 01275 373737
Email: school@stkaths.org.uk

www.stkaths.org.uk

 [@stkathsschool](https://twitter.com/stkathsschool)

 [St Katherine's School](https://www.facebook.com/StKatherinesSchool)

 CATHEDRAL
SCHOOLS
TRUST