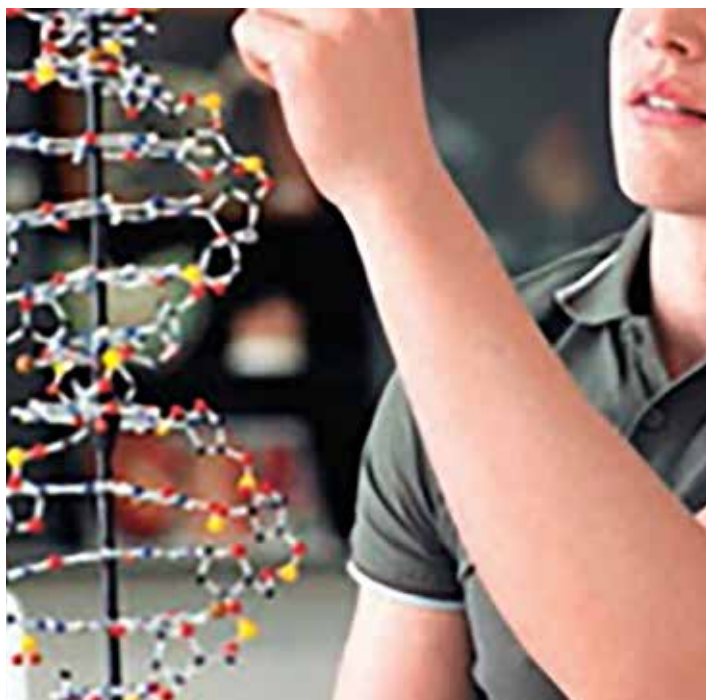


# COURSE OUTLINE

## BIOLOGY - A LEVEL



### COURSE OUTLINE

Through learning about biological principles and processes, you will appreciate how biologists approach problems and provide solutions with efficacy. A Level biology will develop the essential skills of investigating a problem with the aim of generating evidence from which valid conclusions can be drawn.

### DETAILS ABOUT THE COURSE

#### Topics covered:

**Topic 1:** What causes cardiovascular disease?

**Topic 2:** What causes cystic fibrosis?

**Topic 3:** How do you get a fertilised egg to a whole organism?

**Topic 4:** How does the rainforest depend on the fig tree?

**Topic 5:** Why are polar bears endangered?

**Topic 6:** How is biology used to solve crimes?

**Topic 7:** How does biology make you a good athlete?

**Topic 8:** How does your brain work?

#### Extra-curricular/trips:

Biological fieldwork trips to @Bristol, Clevedon, Brean and Bristol Zoo

#### Future prospects:

Genetics, teaching medicine, nursing, environmental sciences, forensic science, zoology, veterinary science, ecology

#### You might also take...

Chemistry, physics, maths, PE, psychology, geography

### KEY INFORMATION

#### Prior attainment:

Five grades at 9-4

Grade 6 in GCSE biology or grade 6s in combined science required

Grade 7 in GCSE biology or grade 7s in combined science desirable

Grade 5+ in GCSE maths desirable

#### Assessment:

##### Year 1:

**Paper 1** - Lifestyle, Transport, Genes and Health (50%)

**Paper 2** - Development, Plants and the Environment (50%)

##### Year 2:

**Paper 1** - The Natural Environment and Species Survival

**Paper 2** - Energy Exercise and Communication

**Paper 3** - General and Practical Applications in biology

**100% written examination for all papers**