



# ST KATHERINE'S SIXTH FORM

## COURSE OUTLINES

# COURSE INDEX

<b>Art &amp; Design - A Level</b>	<b>3</b>
<b>Biology - A Level</b>	<b>4</b>
<b>Business Single Award - Vocational</b>	<b>5</b>
<b>Business Double Award - Vocational</b>	<b>6</b>
<b>Chemistry - A Level</b>	<b>7</b>
<b>Drama &amp; Theatre - A Level</b>	<b>8</b>
<b>English Literature - A Level</b>	<b>9</b>
<b>Geography - A Level</b>	<b>10</b>
<b>Health &amp; Social Care - Vocational</b>	<b>11</b>
<b>History - A Level</b>	<b>12</b>
<b>Hospitality - Vocational</b>	<b>13</b>
<b>Mathematics - A Level</b>	<b>14</b>
<b>Further Maths - A Level</b>	<b>15</b>
<b>Creative Digital Media Production - Vocational</b>	<b>16</b>
<b>Philosophy &amp; Ethics - A Level</b>	<b>17</b>
<b>Physical Education - A Level</b>	<b>18</b>
<b>Physics - A Level</b>	<b>19</b>
<b>Product Design - A Level</b>	<b>20</b>
<b>Psychology - A Level</b>	<b>21</b>
<b>Sport - Vocational</b>	<b>22</b>
<b>Work Skills - Vocational</b>	<b>23</b>

# COURSE OUTLINE

## ART & DESIGN - A LEVEL



St Katherine's School



### COURSE OUTLINE

This is a creative and exciting course and you will develop your artistic ability using a wide range of media. All students study a core curriculum covering drawing, mixed media, painting, sculpture, printmaking and written analytical skills. Students will work from primary and secondary sources in the classroom and visit galleries regularly to experience the work of other artists first hand.

### DETAILS ABOUT THE COURSE

#### Topics covered:

In the first year of the course students are given a thorough grounding in core skills through experimentation using a wide variety of media. After the spring break students continue to develop their own ideas and specialisms more thoroughly whilst working on a personal coursework project.

#### Co-curricular/trips:

An annual visit is made to either local or national galleries and exhibitions. Enrichment life drawing is organised every year, with visiting tutors from Weston College.

#### Future prospects:

Higher Education to study an arts course, animator, artist, film maker, graphic designer, interactive games designer, photographer, video contents developer, web designer.

#### You might also take...

Product design, media and film, hospitality.

### KEY INFORMATION

#### Prior attainment:

Five grades at 9-4

Grade 5 in GCSE Art required

Grade 6 in GCSE Art desirable

#### Assessment:

##### Year 1:

Continual assessment from both members of staff who teach the course. Students always have current personal targets that are written in consultation with teachers. Final personal coursework project is started after the spring break.

##### Year 2:

One complete coursework personal project produced in eight school months.

Exam preparation for three months and a final piece completed in a 15 hour exam.

# COURSE OUTLINE

## BIOLOGY - A LEVEL



### COURSE OUTLINE

Through learning about biological principles and processes, you will appreciate how biologists approach problems and provide solutions with efficacy. A Level biology will develop the essential skills of investigating a problem with the aim of generating evidence from which valid conclusions can be drawn.

### DETAILS ABOUT THE COURSE

#### Topics covered:

- Topic 1: What causes cardiovascular disease?
- Topic 2: What causes cystic fibrosis?
- Topic 3: How do you get a fertilised egg to a whole organism?
- Topic 4: How does the rainforest depend on the fig tree?
- Topic 5: Why are polar bears endangered?
- Topic 6: How is biology used to solve crimes?
- Topic 7: How does biology make you a good athlete?
- Topic 8: How does your brain work?

#### Co-curricular/trips:

Biological fieldwork trips to @Bristol, Clevedon, Brean and Bristol Zoo.

#### Future prospects:

Genetics, teaching medicine, nursing, environmental sciences, forensic science, zoology, veterinary science, ecology.

#### You might also take...

Chemistry, physics, maths, PE, psychology, geography.

### KEY INFORMATION

#### Prior attainment:

- Five grades at 9-4
- Grade 6 in GCSE biology or grades 6,6 in combined science required
- Grade 7 in GCSE biology or grades 7, 7 in combined science desirable
- Grade 5+ in GCSE maths desirable

#### Assessment:

##### Year 1:

- Paper 1** - Lifestyle, Transport, Genes and Health (50%)
- Paper 2** - Development, Plants and the Environment (50%)

##### Year 2:

- Paper 1** - The Natural Environment and Species Survival
- Paper 2** - Energy Exercise and Communication
- Paper 3** - General and Practical Applications in biology

**100% written examination for all papers**

# COURSE OUTLINE

## BUSINESS SINGLE AWARD - VOCATIONAL



### COURSE OUTLINE

When you study for a diploma you learn by 'doing'. So expect a mixture of conventional classroom theory and 'real world' practical projects and be prepared to work as a team, just as you would in the workplace. The course provides opportunities for visits to local businesses and guest speakers to work with you in the classroom.

### DETAILS ABOUT THE COURSE

#### Topics covered:

##### Year 12 (National certificate):

Exploring business  
Developing a marketing campaign

##### Year 13 (National extended certificate):

Personal and business finance  
Recruitment and selection process

#### Co-curricular/trips:

Young Enterprise - set up and run your own business and the Pro Share competition. Army team building day.

#### Future prospects:

Business management, human resource management, accounting, finance, business services, higher education.

#### You might also take...

Hospitality, applied science, ICT, sport, health and social care.

### KEY INFORMATION

#### Prior attainment:

Four grades at 9-4  
L2 Pass grade in business is preferred.

#### Assessment:

40% internal assessment  
60% external assessment  
2 units (assessed by exam board)  
Written exam  
Written task  
2 units (assessed internally and moderated)

**Problem solving, teamwork, independence and communication are all essential.**

# COURSE OUTLINE

## BUSINESS DOUBLE AWARD - VOCATIONAL



### COURSE OUTLINE

When you study for a diploma you learn by 'doing'. So expect a mixture of conventional classroom theory and 'real world' practical projects and be prepared to work as a team, just as you would in the workplace. The course provides opportunities for visits to both local and national businesses and guest speakers to work with you in the classroom.

### DETAILS ABOUT THE COURSE

#### Topics covered:

##### Year 12:

Principles of management  
Managing an event

##### Year 13:

International Business  
Work experience

#### Co-curricular/trips:

Young Enterprise - set up and run your own business and the Pro Share competition. Army team building day.

#### Future prospects:

Business management, human resource management, accounting, finance, marketing, higher education, apprenticeships.

#### You might also take...

Hospitality, applied science, ICT, sport, health and social care.

### KEY INFORMATION

#### Prior attainment:

Four grades at 9-4  
L2 Merit grade in business is preferred.

#### Assessment:

40% internal assessment  
60% external assessment

#### 3 units (assessed by exam board)

Written exam  
Written task pre seen case study

#### 5 units (assessed internally and moderated)

**Problem solving, teamwork, independence and communication are all essential.**

# COURSE OUTLINE

## CHEMISTRY - A LEVEL



St Katherine's School



### COURSE OUTLINE

Chemistry is an enjoyable and interesting subject and it can open up many different options. Successful study proves that you possess such qualities as creativity, numeracy and the ability to think logically and solve problems.

These qualities are important in careers from accountancy to zoology. It could complement other sciences or be part of a broader range of subjects.

### DETAILS ABOUT THE COURSE

#### Topics covered:

Topic 1: Practical skills in chemistry

Topic 2: Foundations in chemistry

Topic 3: Periodic table and energy

Topic 4: Core organic chemistry

Topic 5: Physical chemistry and transition elements

Topic 6: Organic chemistry and analysis

#### Co-curricular/trips:

Chemistry Olympiad, Cambridge Chemistry Challenge.

#### Future prospects:

Biochemistry, chemistry, teaching, medicine, nursing, environmental sciences, forensic science, veterinary science, accounting.

#### You might also take...

Biology, physics, maths, PE, psychology.

### KEY INFORMATION

#### Prior attainment:

Five grades at 9-4

Grade 6 in GCSE chemistry or grades 6,6 in combined science required

Grade 7 in GCSE chemistry or grades 7,7 in combined science desirable

#### Assessment:

Year 1:

20 Marks multiple choice

50 Marks structured questions Paper 2 (50%)

70 marks structured questions

Year 2:

15 Marks multiple choice

85 Marks structured questions Paper 2 (26%)

85 Marks structured questions

Practical Skills - Teacher-assessed and awarded as a separate pass/fail grade

# COURSE OUTLINE

## DRAMA & THEATRE - A LEVEL



### COURSE OUTLINE

The A Level course focuses on developing practitioner knowledge and methodologies used to create effective theatre. The course is split into three sections; C1 devising original theatre with supporting coursework, C2 group and solo performance and C3 written exam. We study a range of texts and a variety of theatre makers such as Stanislavski, Brecht, Berkoff, Frantic assembly and Artaud.

### DETAILS ABOUT THE COURSE

#### Topics covered:

Component One: Devising

Component Two: Text in Performance

Component Three: Theatre makers in Practice

#### Co-curricular/trips:

Theatre visits to support the written evaluation of live theatre in Year 12 and 13 as well as continual after school rehearsals. Professional theatre company workshops to deepen knowledge and theory.

#### Future prospects:

Theatre work, acting, directing, stage management, teaching, law and script writing.

#### You might also take...

English literature, art and design, media and film, history.

### KEY INFORMATION

#### Prior attainment:

Five grades at 9-4

Grade 5 in GCSE drama and grade 5 English literature required

Grade 6 in GCSE drama and grade 6 English literature desirable

#### Assessment:

##### Year 12:

Mock performances

Mock coursework and exam

##### Year 13:

C1 Devising 40%

C2 Text in Performance 20%

C3 Theatre makers in practise 40%

**Communication, teamwork, independence and creativity are essential skills for this course.**



# COURSE OUTLINE

## ENGLISH LITERATURE - A LEVEL



St Katherine's School



### COURSE OUTLINE

Learners encounter a rich range of literary texts and develop skills of reading, analysis and synthesis. Wider reading is an essential part of the course. Communication, including the ability to discuss the critical context of texts and expressing ideas in an academic register, is at the heart of the subject.

### DETAILS ABOUT THE COURSE

#### Topics covered:

From Shakespeare to modern literature, the course covers all forms of literature in every genre. There is a coursework element in Year 13 with an exploration of personal investigation into pre 1914 and post 1914 texts.

#### Co-curricular/trips:

A variety of trips and guest speakers from a range of universities allow students to engage with all aspects of the course and beyond.

#### Future prospects:

Higher education, management, journalism, teaching, marketing, advertising and many more.

#### You might also take...

History, philosophy and ethics, media and film, drama.

### KEY INFORMATION

#### Prior attainment:

Five grades at 9-4

5 grade in GCSE English and grade 5 English literature required

6 grade in GCSE English and grade 6 English literature desirable

#### Assessment:

##### Year 1:

100% examination

This is 40% of the course

##### Year 2:

40% examination

20% coursework

This is 60% of the course

**Ability to read, teamwork, independence and creativity are all essential.**

# COURSE OUTLINE

## GEOGRAPHY - A LEVEL



### COURSE OUTLINE

Studying geography at A Level provides you with knowledge and understanding that is essential for any citizen of the planet in the 21st century. Through exciting topics you will understand the nature of physical and human geography whilst unpicking the debates surrounding contemporary global challenges. The course will equip you with the skills necessary for success in higher education and the world of work. Geography is a multidisciplinary subject in a world that increasingly values people who have the skills to work across the physical and social sciences.

### DETAILS ABOUT THE COURSE

#### Topics covered:

Tectonic Processes and Hazards  
Coastal Landscapes and Change  
Water Insecurity  
Energy Security  
Globalisation  
Diverse Places  
Superpowers  
Health, Human Rights and Intervention

#### Co-curricular/trips:

Three days of group fieldwork, coastal and urban.  
One independent day of fieldwork to complete Unit 4.

#### Future prospects:

Environmental engineering, politics, archaeology, higher education, teaching, journalism, planning and development, civil service, non-profit, international development, architecture, conservation.

#### You might also take...

Maths, biology, chemistry, history, English literature, philosophy and ethics, psychology.

### KEY INFORMATION

#### Prior attainment:

Five grades at 9-4  
Grade 5 in GCSE geography required  
Grade 6 in GCSE geography desirable  
For high attaining students, GCSE geography may not be required.

#### Assessment:

Unit 1: Physical Geography  
(2 hours and 15 minute written examination, 30%)

Unit 2: Human Geography  
(2 hours and 15 minute written examination, 30%)

Unit 3: Synoptic Geography  
(2 hours and 15 minute written examination, 20%)

Unit 4: Independent Investigation  
(Course work, 20%)

**An enquiring mind is essential.**

# COURSE OUTLINE

## HEALTH & SOCIAL CARE - VOCATIONAL



### COURSE OUTLINE

Health and Social Care aims to provide an introduction to the sector. It is for learners who are interested in learning about the health and social care sector. Learners can also benefit from opportunities for deep learning where they are able to make connections among units and select areas of interest for detailed study. It is ideal for those wishing to look into care in the future.

### DETAILS ABOUT THE COURSE

#### Topics covered:

Year 12 (National certificate):

Unit 1: Building positive relationships in H&SC

Unit 2: Equality, diversity and rights in H&SC

Unit 3: Health, safety and security in H&SC

Year 13 (National extended certificate):

Unit 4: Anatomy and physiology for H&SC

Unit 13: Sexual health, reproduction and early development stages

Unit 24: Public health

#### Co-curricular/trips:

Working with our links such as the Penny Brohn, we will look to ensure that you can apply your health care / university setting.

#### Future prospects:

Care sector, higher education, mental health, nursing, midwifery, adult care, child care, teaching, public services.

### KEY INFORMATION

#### Prior attainment:

Five grades at 9-4

Grade 4 in English preferred

Grade 5 in English desirable

#### Assessment:

75% external assessment

25% internal assessment

#### Year 1

Unit 1: Building positive relationships in H&SC

Unit 2: Equality, diversity and rights in H&SC

Unit 3: Health, safety and security in H&SC

#### Year 2

Unit 4: Anatomy and physiology for H&SC

Unit 13: Sexual health, reproduction & early development

Unit 22: Public health

# COURSE OUTLINE

## HISTORY - A LEVEL



### COURSE OUTLINE

The A Level course comprises of four units: British, German and American history as well as an independent study. The study of Germany's transition from democracy to dictatorship includes an opportunity to visit Auschwitz-Birkenau in Poland. Students will also learn of the struggle of different groups to gain their freedom and equal rights within American society. Students will also hone their source skills examining the later Tudor monarchs: Edward, Mary and Elizabeth.

### DETAILS ABOUT THE COURSE

#### Topics covered:

British history  
German history  
Thematic study - civil rights in America  
Personal Investigation 3000-4000 word essay

#### Co-curricular/trips:

Residential trip to Auschwitz.

#### Future prospects:

Apart from being interesting, history can be extremely useful. Employers recognise the variety of skills that its study can encourage such as the ability to analyse information and the ability to construct an argument effectively. It relates to a number of career paths such as law, teaching, politics, curating, and other higher education courses.

#### You might also take...

English literature, philosophy and ethics, geography, drama and theatre studies, psychology.

### KEY INFORMATION

#### Prior attainment:

Five grades at 9-4  
Grade 5 in GCSE history required  
Grade 6 in GCSE history desirable

#### Assessment:

##### Year 1

Unit 1: British history 1547-1603  
Unit 2: German history 1919-1963

##### Year 2

Unit 3: Thematic study - Civil rights in America  
Unit 4a: Personal investigation (3000-4000 word essay)

**Source analysis, teamwork, independence and communication are all essential.**

# COURSE OUTLINE

## HOSPITALITY - VOCATIONAL



St Katherine's School



### COURSE OUTLINE

The hospitality industry is made up of many sectors, including hotels, restaurants, pubs, visitor attractions, events management and contract catering. The Level 3 BTEC Subsidiary Diploma in Hospitality will give you a taste of the huge range of job opportunities which exist in this young and dynamic service industry. Your learning will take you out of the classroom and into our state of the art kitchens and training restaurant - The Leaf at Ham Green. Here you will gain valuable practical experience and learn from serving real customers.

### DETAILS ABOUT THE COURSE

#### Topics covered:

##### Year 12

Unit 1: The hospitality industry

Unit 6: Food and drink service

Unit 22: Planning a hospitality event

Unit 2: Supervising customer service

##### Year 13

Unit 12: World food

Unit 3: Providing customer service

Unit 7: Alcoholic beverages

#### Co-curricular/trips:

Work with a number partners to deliver high quality placements including McDonalds, The Marriott and Penny Brohn.

#### Future prospects:

Hospitality industry, events management, hotel management, restaurateur, human resource management.

#### You might also take...

Business, health and social care, sport, media and film, art.

### KEY INFORMATION

#### Prior attainment:

Four grades at 9-4

L2 pass in hospitality

L2 merit in hospitality desirable

#### Assessment:

Unit 1: The hospitality industry

Unit 2: Supervising customer service

Unit 3: Providing customer service

Unit 6: Food and drink service

Unit 7: Alcoholic beverages

Unit 12: World food

Unit 22: Planning events

**100% Coursework and practical assessments.  
There is no external exam.**

# COURSE OUTLINE

## MATHEMATICS - A LEVEL



### COURSE OUTLINE

Mathematics at AS and A2 builds on work you will have met at GCSE, but also involves new ideas produced by some of the greatest minds of the last millennium. If you have a mathematical flair and enjoy the challenge of problem solving then this is the course for you.

### DETAILS ABOUT THE COURSE

#### Topics covered:

Pure 1  
Pure 2  
Applied (Mechanics and Statistics)

#### Co-curricular/trips:

You will have the opportunity to take part in UKMT National Challenge competitions as an individual and as part of a team representing the school. Visits to maths events at UWE and Bristol University, as well as maths Inspiration at the Bristol Hippodrome.

#### Future prospects:

All forms of engineering, accountancy, aerospace and defence, manufacturing, environmental industry, pharmaceutical industry, healthcare, bio science, medicine.

#### You might also take...

Further maths, physics, chemistry, biology, geography, psychology.

### KEY INFORMATION

#### Prior attainment:

Five grades at 9-4  
Grade 7 in GCSE maths required  
Grade 8 in GCSE maths desirable

#### Assessment:

##### Year 1 - Should it be appropriate to only take course to AS Level:

100% examination  
1 Pure - 120 mins  
1 Applied (Mechanics & Statistics) - 60 mins

##### Year 2:

2 Pure exams - 120 mins each  
1 Applied (Mechanics & Statistics) - 120 mins

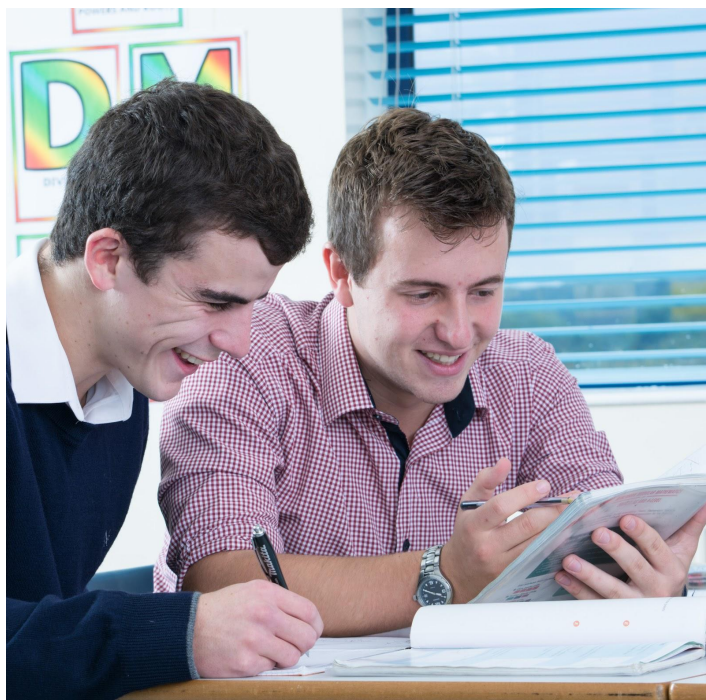
**Problem solving, teamwork, independence and communication are all essential.**

# COURSE OUTLINE

## FURTHER MATHS - A LEVEL



St Katherine's School



### COURSE OUTLINE

Further mathematics at AS and A2 should be studied in addition to AS and A2 maths. It is an opportunity to both broaden and deepen your mathematical knowledge, through studying additional more challenging topics in pure maths as well as a wider range of topics in applied maths, including decision maths and mechanics.

### DETAILS ABOUT THE COURSE

#### Topics covered:

Decision maths  
Pure maths  
Mechanics

#### Co-curricular/trips:

Opportunities in and outside of school including Bristol University student lessons and engineering in the Access to Bristol Scheme.

#### Future prospects:

Finance and banking, operational research, computer game design, engineering, health, education, teaching, accounting.

#### You might also take...

Maths, physics, chemistry, biology, product design, PE, psychology.

### KEY INFORMATION

#### Prior attainment:

Five grades at 9-4  
Grade 8 in GCSE maths required  
Grade 9 in GCSE maths desirable

#### Assessment:

##### Year 1 - Should it be appropriate to only take course to AS Level:

100% examination  
1 Decision maths exam  
1 Pure maths exam

##### Year 2:

100% examination  
2 Pure maths exams  
1 Decision maths exam  
1 Mechanics exam

**Problem solving, teamwork, independence and communication are all essential.**

# COURSE OUTLINE

## CREATIVE DIGITAL MEDIA PRODUCTION - VOCATIONAL



### COURSE OUTLINE

The qualification provides a coherent introduction to the study of creative digital media production. Learners develop an understanding of the media industry through analysing media representations and pitching and producing media projects.

Over three units of mandatory content, learners gain a broad understanding of the subject and learn the skills to produce media artefacts. They develop their ability to analyse and deconstruct media images and representations. They learn the communication and planning skills needed to work in teams through vocational media projects. We also deliver an optional introductory unit in film which allows learners to create engaging digital media content and platforms.

### DETAILS ABOUT THE COURSE

#### Topics covered:

Unit 1: Media Representation  
Unit 4: Pre-Production  
Unit 8: Responding to a brief  
Unit 10: Film Production

#### Co-curricular/trips:

Links with BBC Talent Ticket - opportunity for work experience, links with BFI Bristol - opportunity to gain Silver Arts Award and cinema trips.

#### Future prospects:

This course will support entry to HE courses in a wide range of disciplines, including aspects of creative media, depending on the subjects taken alongside it.

Students develop their knowledge of digital processes and software through practical projects which would give them an advantage if applying for entry level roles in marketing such as a marketing assistant or media sales as well as working as publishing assistants, updating websites and hosting content.

#### You might also take...

English, product design, art and design, history, drama and theatre studies, sport/PE, business studies.

### KEY INFORMATION

#### Prior attainment:

Five grades at 9-4  
Grade 4 in GCSE English required  
Grade 6 in GCSE English desirable  
An interest in Media/ Film required

#### Assessment:

##### Year 1

Media Representation - externally assessed exam

Introductory practical skills and workshops - leading to Unit 4 Learning Aims A/B/C and Unit 10 Learning Aim A (involving developing blogs and research for film)

##### Year 2:

Responding to a brief - externally assessed exam  
Unit 10 Learning Aims B/C/D and Unit 4 Learning Aim D (involving film making and editing and evaluation)

**Creativity, teamwork, independence and communication are all essential.**



# COURSE OUTLINE

## PHILOSOPHY & ETHICS - A LEVEL



### COURSE OUTLINE

Do you ever question life? If so then this course is for you. You will be able to develop your interest and enthusiasm for a rigorous study of philosophy and ethics and relate it to the wider world. You will adopt an enquiring, critical and reflective approach and reflect on and develop your own values, opinions and attitudes in the light of your learning. You will learn and understand how people make moral decisions and you will formulate your own opinions on various current ethical issues.

### DETAILS ABOUT THE COURSE

#### Topics covered:

Arguments for the existence of God  
Ethical theory  
The basis of religious belief  
Life after death  
War and peace, justice and law

#### Future prospects:

Philosophy and ethics is an excellent subject that combines many disciplines. It can lead you onto a number of career paths including, higher education, teaching, politics, the civil service, marketing, advertising and law.

#### You might also take...

English, history, geography, psychology, media and film.

### KEY INFORMATION

#### Prior attainment:

Five grades at 9-4  
Grade 5 in GCSE English required  
Grade 6 in GCSE English desirable

#### Assessment:

##### Year 1

Arguments for the existence of God  
Ethical theory  
The study of a religion

##### Year 2:

Arguments for the existence of God  
Ethical theory  
The study of a religion

**Critical thinking, teamwork, independence and communication are all essential.**

# COURSE OUTLINE

## PHYSICAL EDUCATION - A LEVEL



### COURSE OUTLINE

A Level PE gives you a chance to study how the body responds to exercise, how you learn new skills, where sport sits in society, how the mind influences performance and how sport has developed. Studying these components will improve your understanding of sporting performance, coaching and sports analysis.

### DETAILS ABOUT THE COURSE

#### Topics covered:

Physiological Factors Affecting Performance  
Psychological Factors Affecting Performance  
Socio-cultural and Contemporary Issues  
Performance within Physical Education

#### Co-curricular/trips:

We work with our partners to access a range of facilities and placements.

#### Future prospects:

Higher education, PE teaching, sports development, sports journalism, sports media, sports coaching, performance analysis, strength and conditioning, nutrition, physiotherapy, sports therapy, sports administration, sports engineering, sports science, sports psychology.

#### You might also take...

Biology, maths, physics, psychology, geography, chemistry.

### KEY INFORMATION

#### Prior attainment:

Five grades at 9-4  
Grade 5 in GCSE biology and a Merit in Sport required  
Grade 6 in GCSE biology and a Distinction in Sport desirable  
Must be participating in regular competitive club level sport outside of school

#### Assessment:

##### Year 1

Unit 1: Physiological Factors Affecting Performance - 30%  
Unit 2: Psychological Factors Affecting Performance - 20%

##### Year 2:

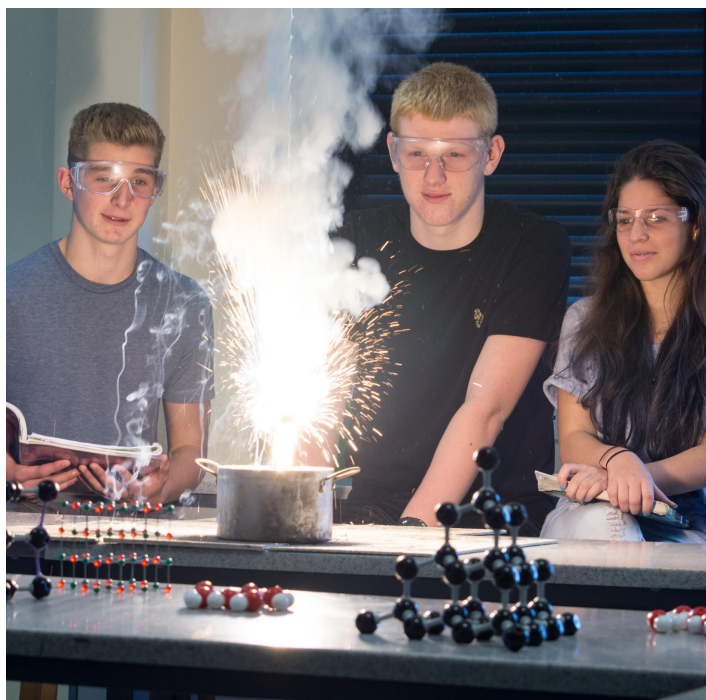
Unit 3: Socio-cultural and contemporary issues - 20%  
Unit 4: Performance within physical education - 30% (50% practical / 50% EAPI)

# COURSE OUTLINE

## PHYSICS - A LEVEL



St Katherine's School



### COURSE OUTLINE

Physics A Level considers how and why things work. It covers topics ranging from Quantum Mechanics to the Origin of the Universe. Look at the world around you; physics is the only course which explains the universe from small to large, from beginning to the end. If you want to be able to explain where you came from and where you are going to, then this is the course for you. Employers have listed it time and again as one of the most respected A Levels available.

### DETAILS ABOUT THE COURSE

#### Topics covered:

- Topic 1: Development of practical skills
- Topic 2: Foundations of physics
- Topic 3: Forces and motion
- Topic 4: Electrons, waves and photons
- Topic 5: Newtonian world and astrophysics
- Topic 6: Particles and medical physics

#### Co-curricular/trips:

There are a range of enrichment activities including the British Physics Olympiad and Annual CERN trips.

#### Future prospects:

Medicine, engineering, teaching, higher education, research, MOD and computer science.

#### You might also take...

Maths, further maths, chemistry, biology, product design, PE.

### KEY INFORMATION

#### Prior attainment:

- Five grades at 9-4
- Grade 6 in GCSE physics or grades 6,6 in combined science and grade 6 in maths required
- Grade 7 in GCSE physics or grades 7,7 in combined science and grade 7 in maths desirable

#### Assessment:

##### Year 1

- Breadth in physics examination
- Depth in physics examination

##### Year 2:

- Modelling physics examination
- Exploring physics examination
- Unified physics examination

**Problem solving, teamwork, independence and communication are all essential.**

# COURSE OUTLINE

## PRODUCT DESIGN - A LEVEL



### COURSE OUTLINE

Look at the world around you; everything you come into contact with has been designed and developed by product designers and design engineers. From the clothes you choose to wear, the cars you use for transport, the buildings you live and work in, to the products that make your life easier and more enjoyable. Product design is an extremely diverse and rewarding career, which is essential in an ever changing world.

### DETAILS ABOUT THE COURSE

#### Topics covered:

Core technical principles  
Core designing and making principles  
Additional specialist knowledge

#### Co-curricular/trips:

STEM club, various competitions and trips to London and Glasgow.

#### Future prospects:

Product design, industrial design, engineering, graphic design, architecture, teaching, furniture designer, interior designer, product management

#### You might also take...

English, product design, fashion and textiles, art, physics, mathematics.

### KEY INFORMATION

#### Prior attainment:

Five grades at 9-4  
Grade 5 in GCSE Design and Technology required  
Grade 6 in GCSE Design and Technology desirable

#### Assessment:

Written Examination - 50% - June of the second year.  
Design and Make project - 50% - Starts term 4 of the first year

**Creativity, teamwork, independence, communication are all essential.**

# COURSE OUTLINE

## PSYCHOLOGY - A LEVEL



St Katherine's School



### COURSE OUTLINE

Psychology is the science of mind and behaviour. We use scientific methods in order to explore how and why people behave the way that they do. Psychology covers a broad range of topic areas which aim to prepare learners for a variety of university courses and employment opportunities such as education, sport, health and media. Psychology will suit students who are interested in other people and the differences between us all.

### DETAILS ABOUT THE COURSE

#### Topics covered:

Memory  
Attachment relationships  
Social influence  
How to conduct psychological research  
Psychopathology  
Approaches to explaining human behaviour  
Issues and debates in psychology  
Biopsychology  
Schizophrenia  
Gender and aggression

#### Co-curricular/trips:

Attend A level conference in London with world famous key note speaker. Possible trip to Bristol Zoo to experience observational research. Opportunity for students to attend specialist exam focused workshops.

#### Future prospects:

Psychologist, teaching, counselling, marketing, consulting, human resource management.

#### You might also take...

Biology, PE, English, geography, history, maths, sport, philosophy and ethics.

### KEY INFORMATION

#### Prior attainment:

Five grades at 9-4  
Grade 5 in GCSE biology and grade 5 in maths required  
Grade 6 in GCSE biology and grade 6 in maths desirable

#### Assessment:

Three 2 hour exams at the end of Year 13:  
Introductory topics in psychology  
Psychology in context  
Issues and options in psychology

**Application of knowledge, evaluation, teamwork, independence and communication are all essential.**

# COURSE OUTLINE

## SPORT - VOCATIONAL



St Katherine's School



### COURSE OUTLINE

You will learn about the fundamental anatomy and physiology that affects sports performance, how training and following programmes of work can adapt the body for sporting performance. Understand the potential careers and job opportunities can be followed and the analysis of practical performance.

### DETAILS ABOUT THE COURSE

#### Topics covered:

Cognitive functioning  
Developmental psychology  
Research methodologies  
Social influences  
Biopsychology  
Issues and debates  
Gender  
Schizophrenia

#### Co-curricular/trips:

Links with Bristol University for guest lectures and visits.

#### Future prospects:

Psychologist, teaching, counselling, marketing, consulting, human resource management.

#### You might also take...

Biology, PE, English, geography, history, maths, sport, philosophy and ethics.

### KEY INFORMATION

#### Prior attainment:

Five grades at 9-4  
L2 pass in sport preferred  
L2 merit in sport desirable

#### Assessment:

**40% external assessment**

**60% internal assessment**

#### Year 1:

**Unit 1 (90 GLH mandatory)** - Body systems and the effects of physical activity (external exam)

**Unit 2 (90 GLH mandatory)** - Sports coaching and activity leadership (coursework)

#### Year 2:

**Unit 3 (60 GLH mandatory)** - Sports organisation and development (external exam)

**Unit 18 (60 GLH optional)** - Practical skills in sport and physical activities

# COURSE OUTLINE

## WORK SKILLS - VOCATIONAL



St Katherine's School



### COURSE OUTLINE

This course is designed to support students who are not yet ready for Level 3 study. Learners develop key work skills to support them in their future study and career. The course is studied alongside GCSE English and Maths, where required, and a programme of work experience, to ensure students are able to progress to Level 3 study or further training at the end of the year.

### DETAILS ABOUT THE COURSE

#### Topics covered are wide ranging and include:

- Writing a CV
- Online Branding for Career Success
- Managing your own money
- Developing personal skills for leadership
- Qualities and transferable skills for work
- Preparing for a work placement

#### Work Experience:

The course is studied alongside two days work experience a week, where students get the opportunity to put their learning into practice and gain valuable experience of a workplace.

#### Future prospects:

Students will finish the course equipped with the equivalent of at least five GCSEs at 4 or above, enabling them to progress to Level 3 study, training or an apprenticeship. The course prepares students for work, enabling them to develop essential skills for a successful future career.

### KEY INFORMATION

#### Prior attainment:

Students must have achieved one GCSE at grade 4 or above or equivalent. Students without a grade 4 in Maths or English will need to continue to study Maths and English at Level 2, alongside the Work Skills programme.

#### Assessment:

Students are assessed through coursework throughout the course.

#### Qualification achieved:

Students work towards the Pearson Work Skills Level 2 BTEC Diploma, which is worth the equivalent of 4 GCSE grades.



**St Katherine's School**

Ham Green,  
North Somerset  
BS20 0HU

Telephone: 01275 373737  
Email: [school@skdrive.org](mailto:school@skdrive.org)

[www.stkaths.org.uk](http://www.stkaths.org.uk)

 [@stkathsschool](https://twitter.com/stkathsschool)

 [St Katherine's School](https://www.facebook.com/StKatherinesSchool)

 CATHEDRAL  
SCHOOLS  
TRUST