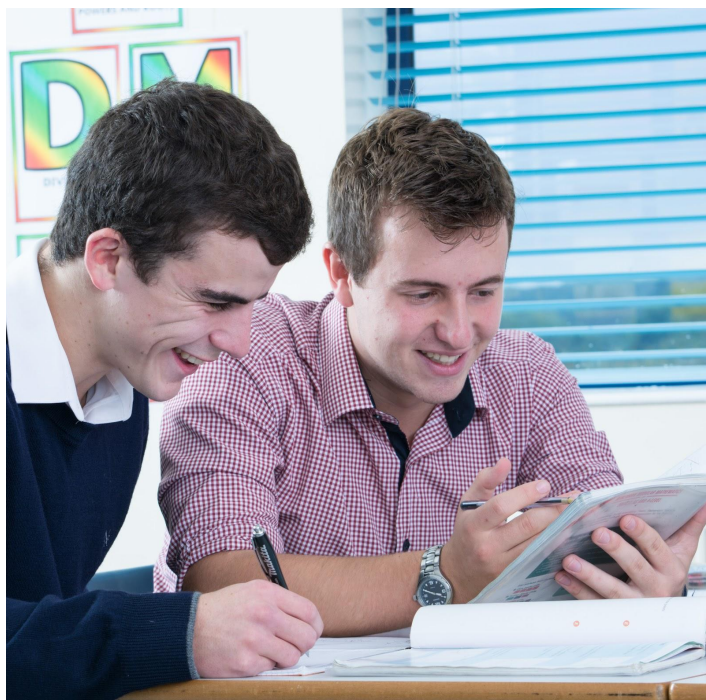


# COURSE OUTLINE

## FURTHER MATHS - A LEVEL



St Katherine's School



### COURSE OUTLINE

Further mathematics at AS and A2 should be studied in addition to AS and A2 maths. It is an opportunity to both broaden and deepen your mathematical knowledge, through studying additional more challenging topics in pure maths as well as a wider range of topics in applied maths, including decision maths and mechanics.

### DETAILS ABOUT THE COURSE

#### Topics covered:

Decision maths  
Pure maths  
Mechanics

#### Co-curricular/trips:

Opportunities in and outside of school including Bristol University student lessons and engineering in the Access to Bristol Scheme.

#### Future prospects:

Finance and banking, operational research, computer game design, engineering, health, education, teaching, accounting.

#### You might also take...

Maths, physics, chemistry, biology, product design, PE, psychology.

### KEY INFORMATION

#### Prior attainment:

Five grades at 9-4  
Grade 8 in GCSE maths required  
Grade 9 in GCSE maths desirable

#### Assessment:

##### Year 1 - Should it be appropriate to only take course to AS Level:

100% examination  
1 Decision maths exam  
1 Pure maths exam

##### Year 2:

100% examination  
2 Pure maths exams  
1 Decision maths exam  
1 Mechanics exam

**Problem solving, teamwork, independence and communication are all essential.**