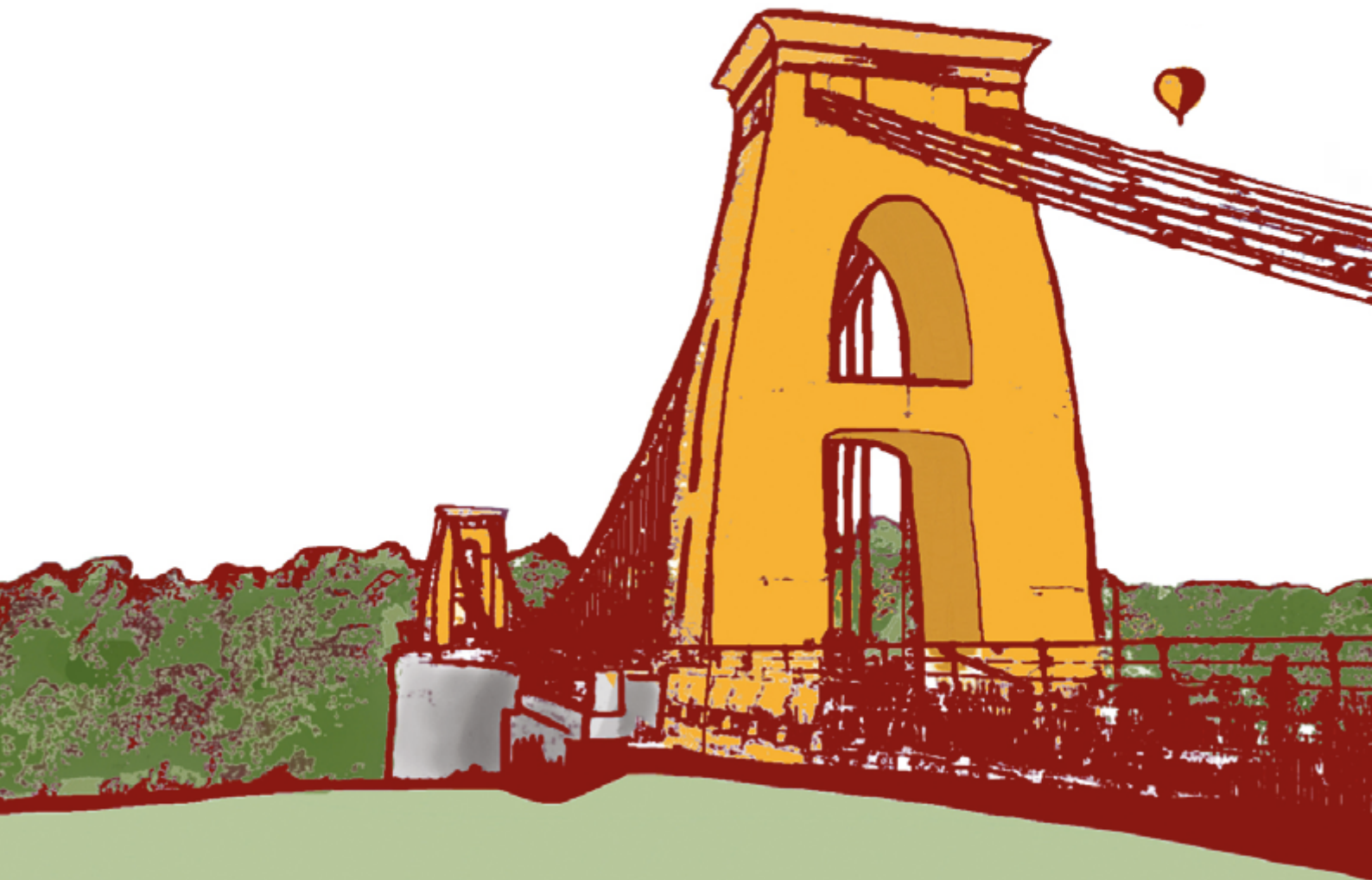




St Katherine's School



Sixth Form Prospectus





CONTENTS

Welcome	03	Enrichment	06
Facilities	04	A Levels - What our students say	06
Sixth Form Council	04	Vocational Courses - What our students say	06
21st Century Learning	05	Reasons to Study With Us	07
Transition and Careers	05	Enrolment Timeline	07

Full course details are in our Course Outline booklet and on our website www.stkaths.org.uk



Welcome to St Katherine's Sixth Form, a small, community-focused Sixth Form in a beautiful rural setting, which allows students to flourish both inside and outside the classroom.

If the events of recent months have taught us anything, it is the incredible importance of community. While our Sixth Form is currently operating in very different ways, and is unlikely to return to normality any time soon, we are proud of the way we have worked together to maintain a culture of support, high aspiration and togetherness here at St Katherine's.

Whilst adapting and developing together, we have continued to encourage students to develop a love of learning and independent inquiry. Our approach is to nurture students to become self-governing young adults who aspire to achieve their full potential. The commitment you show, combined with the support that we provide, will enable you to thrive.

We offer a wide range of course options which cater for all students and future pathways, from traditional academic routes to more work-based, vocational options, all taught to an exceptional standard by our experienced Sixth Form teachers. Smaller class sizes means bespoke learning, with teachers who are able to truly get to know you as a person, and a student.

Uniquely, we are the only school in the UK with a high quality restaurant on site, open to the public. 'The Leaf at Ham Green' is run by our Level 2 and Level 3 Hospitality students who work in bespoke, industry standard facilities which are testament to our ambition of pursuing excellence for all our learners.

Our dedicated post-16 tutorial team offer excellent pastoral care, from delivering study skills sessions designed to prepare students for Key Stage 5 study, to supporting them in achieving their desired post-18 pathways, be that university, apprenticeship or working life.

In St Katherine's Sixth Form we place great value in Student Voice: we want our young people to speak and be heard, to be present and participate, and to make lasting, positive change to our school community.

Those who attend will find themselves frequently challenged, nurtured and empowered with the skills and knowledge to become their best selves, and to leave our school gates and embark on successful futures.

We understand how important choosing a Sixth Form is for you and hope that this prospectus will answer your questions. You can find out more about the Sixth Form, courses and entry requirements by going to www.stkaths.org.uk or by contacting the school by phone.

Geraint Davies
Head of Sixth Form



Facilities and Sixth Form Council

St Katherine's Sixth Form is based in its own purpose-built block, separate from the school, with dedicated facilities designed to meet our students' needs.

THE COMMON ROOM

A modern, collaborative learning space where Year 12 and 13 students can study and share their stresses and triumphs. The Common Room is also used to welcome guest speakers from industry and universities as well as assemblies, quizzes and charity events.

LEARNING RESOURCE CENTRE

The library offers a wide range of literature, resources and extensive ICT access, as well as a quiet, calm study area.

THE WORK ROOM

An exclusive space for Sixth Form students, the work room is equipped with workstations for silent, independent work. A vital area for making the most of dedicated study periods.

CHROMEBOOKS

All Sixth Form students use Chromebooks or laptops to access their learning. We use Google Classroom so students can enrich their understanding and collaborate with one-another on pieces of work both inside and outside of lessons. For more information on Chromebooks and other devices, please contact the Head of Sixth Form.

BREAKOUT AREAS

As well as the lounge areas of the Common Room, Sixth Form students have access to outside facilities such as outdoor seating, table tennis tables and fields during break and lunch times: spaces to relax and catch up with friends.

The Sixth Form is proud to promote leadership opportunities which enable significant contributions to be made within the school and wider community.

We have a thriving Sixth Form Council, led by our Head Students. The team provides valuable input into the running of the Sixth Form as well as contributing to the wider school community.

They gain valuable leadership and management experience through organising events, chairing meetings, line-managing teams of students and promoting the pursuit of excellence.

The Head Students sit on the whole school council, alongside the House Leaders from our four houses, Pankhurst, Stephenson, Turing and Yousafzai. This enables them to take items raised at a school level back to the Sixth Form leadership team, who support the lower school students in effecting change.

 I'm **lucky** that I've had **opportunities** to lead the school. I know these kind of opportunities will give me a **competitive edge** when I leave here.

Year 13 Student



At St Katherine's Sixth Form, we want all students to access the very best teaching and learning.



Students have access to the most effective technology and 21st century educational environments to accelerate their progress. This helps them develop skills to prepare them for life after sixth form, whether they choose to go to university, take up an apprenticeship or go into full time employment.

GOOGLE DRIVE

Teachers and students use Google Drive to collaborate on work, model best practice and provide regular, effective feedback.

GOOGLE CLASSROOM

Teachers use this innovative forum to provide students with dynamic educational resources enabling them to engage with the breadth and depth of their courses.

CLASSCHARTS

Sixth Form students use the ClassCharts platform to keep track of home learning. ClassCharts helps ensure students are fully supported in school and at home in achieving their goals. They receive commendations for exceptional work or behaviour through the system and teachers can notify tutors and parents of any missed deadlines or lessons.

The move from KS4 to KS5 can be both daunting and challenging so we work hard to ensure this transition is as smooth and effective as possible for each student.

Making subject choices is a very important first step so each applicant is invited to a Course Consultation Meeting with the Head of Sixth Form. Parents and carers are welcome to join this discussion around subject choices and the opportunities they bring beyond the Sixth Form.

We can then ensure students are placed on a programme of study that is right for them and enables them to progress to their chosen route when they leave us. All prospective Sixth Form students are invited to join our 'Step into Sixth Form Day' which gives them first-hand experience of the level of work and dedication required to succeed. Coupled with our Summer Work programme in the weeks after GCSEs, this helps prepare students for those first important steps in moving from Year 11 to Year 12.

Additionally, our careers advisor and tutor team are on hand to provide up-to-date information, advice and guidance to ensure students understand the context of their educational journey. Our extensive enrichment programme of CV writing skills, interview techniques and advice on how to complete apprenticeship and UCAS applications, helps our students to be competitive in both the employment and university markets.

This high quality support enables students to realise their aspirations. Each year the majority of our students apply to university with others going on to secure a range of alternative pathways, including high quality apprenticeships and full-time employment.



There is a **good support** network within the **Sixth Form** - if I have a problem I know that it will be resolved quickly.

Year 12 Student

Enrichment and What our Students Say

St Katherine's Sixth Form students access a rich variety of enrichment opportunities.

Our bespoke enrichment programme is designed to widen students' participation and improve their all-important 'soft skills'. Weekly sessions include honing entrepreneurial acumen, building speaking skills with the option to pursue the English Speaking Board qualification, outdoor education, and other options to suit a wide range of young people's tastes and interests.



Students also have a structured tutor programme dedicated to educating and preparing them for when they leave formal education. Important personal and citizenship topics like nutrition, budgeting, voting, personal finance and interview skills are covered.

Our Sixth Form has been involved with high quality programmes such as the British Film Institute Programme, Access to Bristol, Nuffield Research placements, the Cambridge Summer School, as well as working with employers like Ernst & Young, Barclays, Lloyds and PricewaterhouseCoopers. These enriching and networking opportunities and experiences help to inform future pathways.



ACADEMIC PATHWAY

A LEVELS

- My timetable is highly academic and is designed for me to access universities, including the Russell Group.
- I have chosen three A level subjects that will prepare me to study a wide range of university courses.
- My timetable has the right blend of lessons, flipped learning periods, assessment periods and non-contacts.
- By having structured activities set for me during flipped learning periods, I have been able to become more focused.
- My lessons are engaging and my teachers really care about my future. They really want me to succeed.
- I have enrolled into the Pathways to Law programme at Bristol University which is giving me a real insight into the world of law and includes experience in law chambers.
- I am studying the Extended Project Qualification which is great for developing research skills and is something that universities look for.
- The Sixth Form has organised for me to attend university open days, careers fairs and lectures which is really helping me in deciding what I want to study.
- I really enjoy taking part in the enrichment activities like fundraising for charities and use a lot of my non-contacts to plan events with other students.
- This path has met my needs as I can secure a number of university courses when I leave.

APPLIED PATHWAY

VOCATIONAL COURSES

- I have chosen the applied pathway which gives me the option of university or apprenticeships.
- My timetable has academic aspects such as flipped learning periods, but also practical tasks such as managing an event.
- This allows me to stretch myself academically through revising content and developing exam skills and also helps me become more employable through working in teams on projects.
- My teachers set me clear tasks and using Google Classroom, I can see exactly what needs to be done and have access to everything I need all day.
- Having a Chromebook makes it easy for me to manage my time and be productive when working with other class members.
- I have taken part in a number of enrichment activities including practical interview sessions run by Lloyds Bank. This has allowed me to develop important life skills.
- I have received careers guidance throughout my time in sixth form and have listened to university student ambassadors and business advisors, so I feel informed about my next steps.

Reasons to Study with Us and Enrolment Timeline

Personalised learning experience

Options of both **academic** and **vocational pathways** to suit each student

Average grade of B

Enrichment and **extension opportunities** including Extended Project Qualification, Access to Bristol, Pathways to Law and public speaking competitions

Exceptional standard of pastoral care and expert guidance

Extensive **student leadership** opportunities

Small class sizes

Taught **study skills** across Years 12 and 13

21st Century Learning through the use of Chromebooks and Google Classroom



St Katherine's is like **one big family**. It's **supportive** and **comfortable** and the teachers do anything they can to help."

Sixth Form Student

ENROLMENT TIMELINE

15TH
JANUARY
2021

Application form
deadline

EARLY
2021

Subject taster
sessions

NOVEMBER
2020 TO
MARCH 2021

Course
consultation
meetings

27TH
AUGUST
2021

GCSE results
day interview

SEPTEMBER
2021

Enrolment for
St Katherine's
Sixth Form



St Katherine's School

Ham Green
North Somerset
BS20 0HU

Telephone: 01275 373737
Email: school@skdrive.org

www.stkaths.org.uk

 [@stkathsschool](https://twitter.com/stkathsschool)  [St Katherine's School](https://www.facebook.com/StKatherineSchool)

